

SMS Premises Map Worksheet Example 2



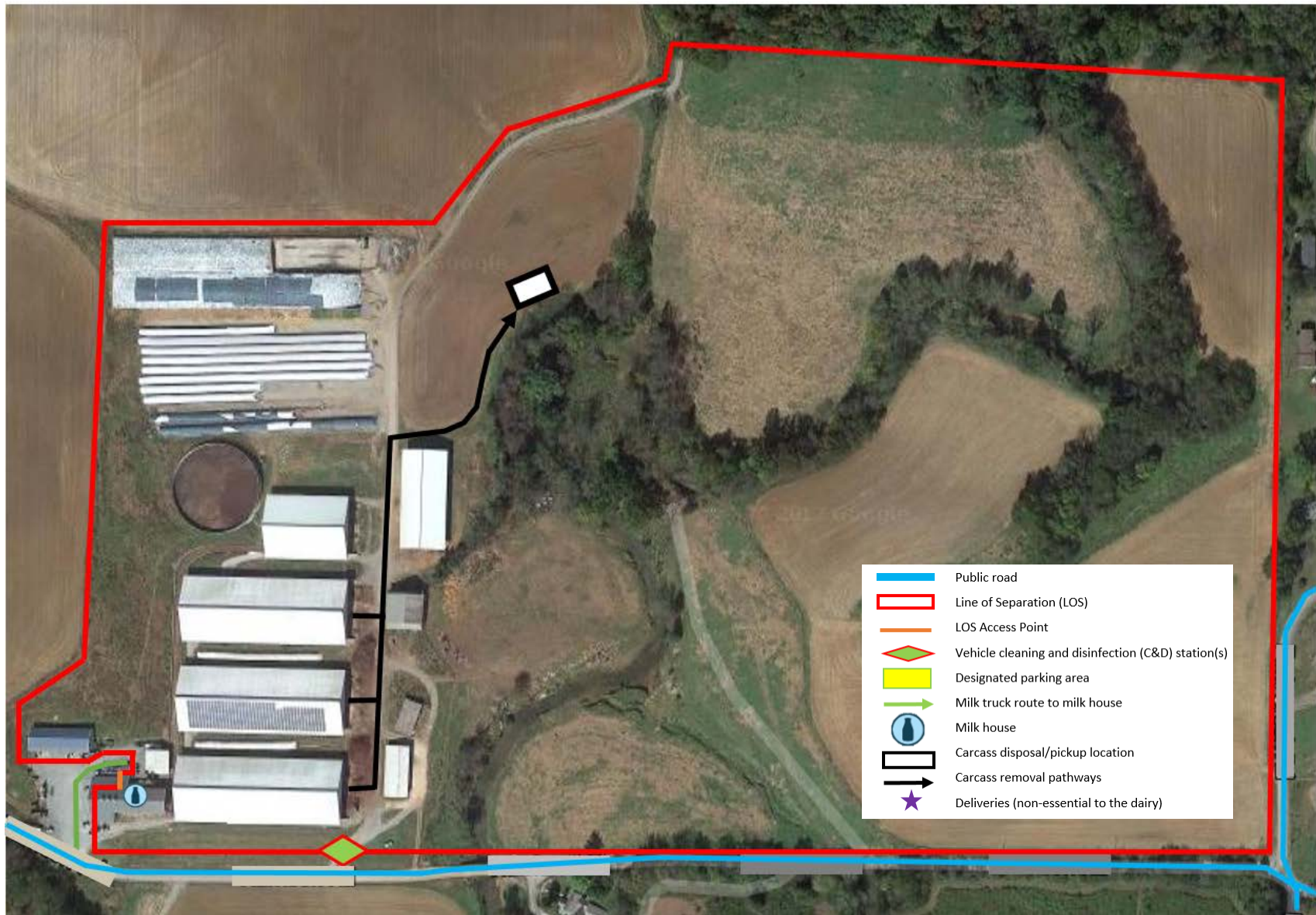
Farm Overview

- Milking 1100 cows
 - Milk 3 times daily
- 20 Employees
- Ship 2 loads of milk per day
 - Direct load to processing
 - Farm-dedicated hose
 - Farm employees able to take milk samples
- Receive feed deliveries (commodities) daily to a site down the road
- Commodities are stored at site down the road and pre-batched lactation diet deliveries made to dairy 3 times per day
- Daily animal movements occur between dairy and site down the road (dry cows, young stock)
 - Heifers and dry cows also kept in another nearby state (could temporarily halt movement for approximately 2 weeks)
- Reclaimed grocery store milk is fed to calves and mixed into lactation and heifer diets: 3 tankers per week delivered
- Shop contains dedicated on-farm equipment
- Receive fuel deliveries 6 times per year
- Garbage picked up once per week
- Dead animals taken to landfill

Use the information and label a Line of Separation (LOS), LOS Access Point(s), Cleaning and Disinfection Station, Milk Truck Route, & Carcass Disposal



Proposed Line of Separation (LOS) based on farm layout, inputs, capabilities of cleaning and disinfection



LOS Access Point(s)

Entry to the operation is restricted to 1 controlled LOS Access Point where the feed truck and other essential deliveries will enter. The milk tanker does NOT cross the LOS. Employees can park outside the LOS in front of the milk house and enter the milk house where they will change footwear and clothing before entering the cattle areas. Deliveries not essential to the operation are delivered to an off-site location. The garbage truck will not enter; the dumpster will be moved to the edge of the LOS.

Cleaning and Disinfection (C&D) Station

There is an operational, clearly marked, and equipped C&D station located at the 2nd farm entrance and it is labeled on the premises map by the green diamond. The wash pad for the C&D station is made of gravel and slopes AWAY from animal housing, feed receiving or storage areas, waterways, and on-farm traffic areas. This operation uses buffer strips to manage effluent from the C&D area to ensure susceptible animals are not exposed. Effluent from the C&D Station is managed following all state and local regulations.

Milk Collection

The drive path from the LOS Access Point to the milk house is made of gravel and is free of animal excrement and labeled on the premises map at the end of this plan. **The milk truck/tanker** does NOT cross the LOS and the truck/tanker is not cleaned and disinfected (C&D). This dairy operation only uses milk trucks/tankers that haul milk from this operation. **The milk transfer hose** is Farm-dedicated. The milk hauler/driver

- ✓ EXITS the cab but does not cross the LOS.
- ✓ Disconnects trailer and connects trailer for direct load.
- ✓ Wears gloves provided by hauler when handling any equipment that remains on farm.

Carcass Disposal

In an FMD outbreak, dead animals are disposed of by compost which prevents the attraction of wildlife, rodents, and other scavengers, and is in accordance with state and federal laws. Rendering trucks will not be allowed to cross the LOS.

Feed

In an outbreak, feed trucks delivering feedstuffs would be augered across the LOS into a farm vehicle/feed wagon located on-site. Once daily, the feed wagon will need to cross the LOS at the C&D station. Reclaimed grocery store milk will NOT be fed in an outbreak.